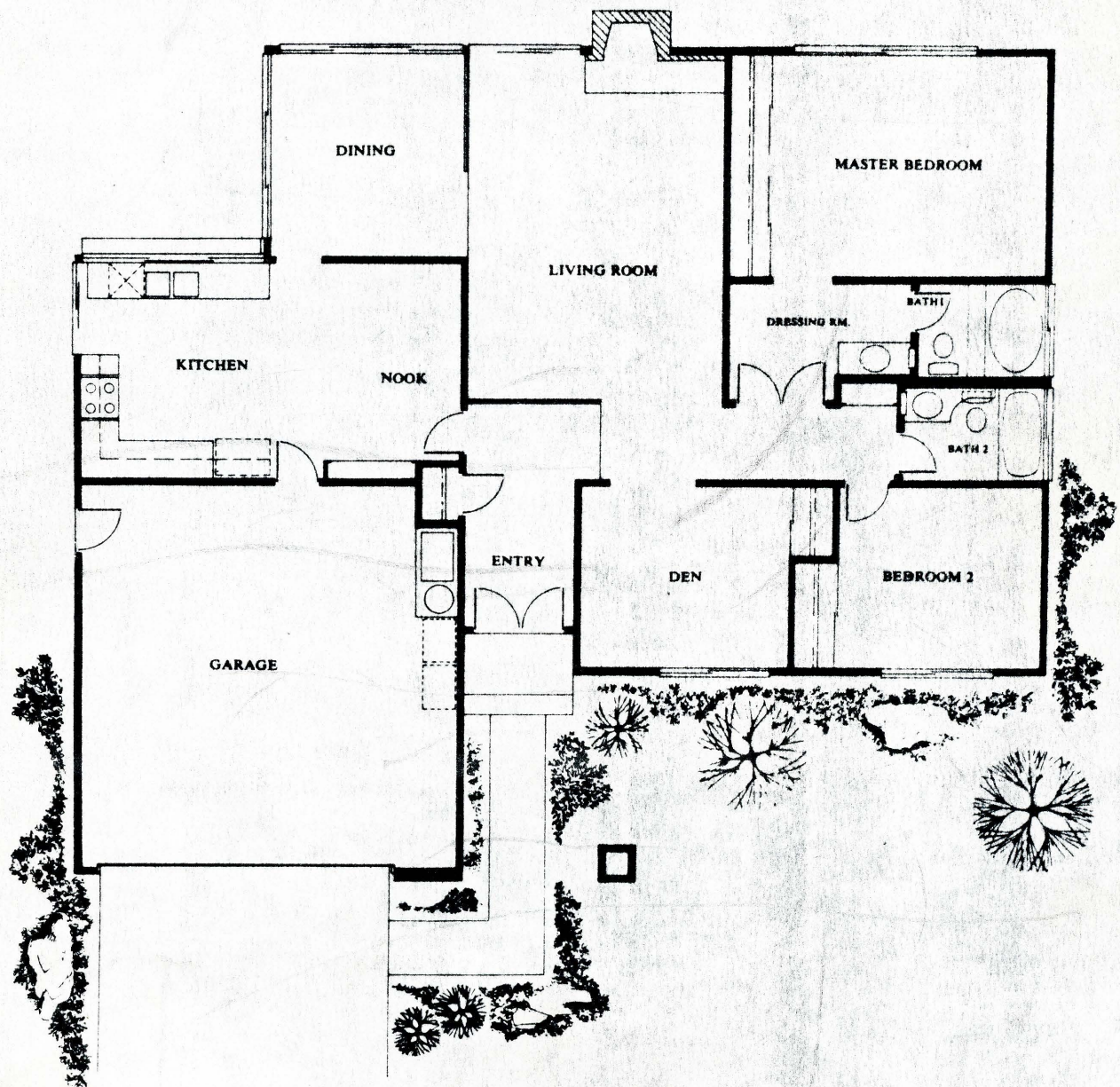


# ORIGINAL MEADOWS

## THE MONACO • You will see an exceptionally practical

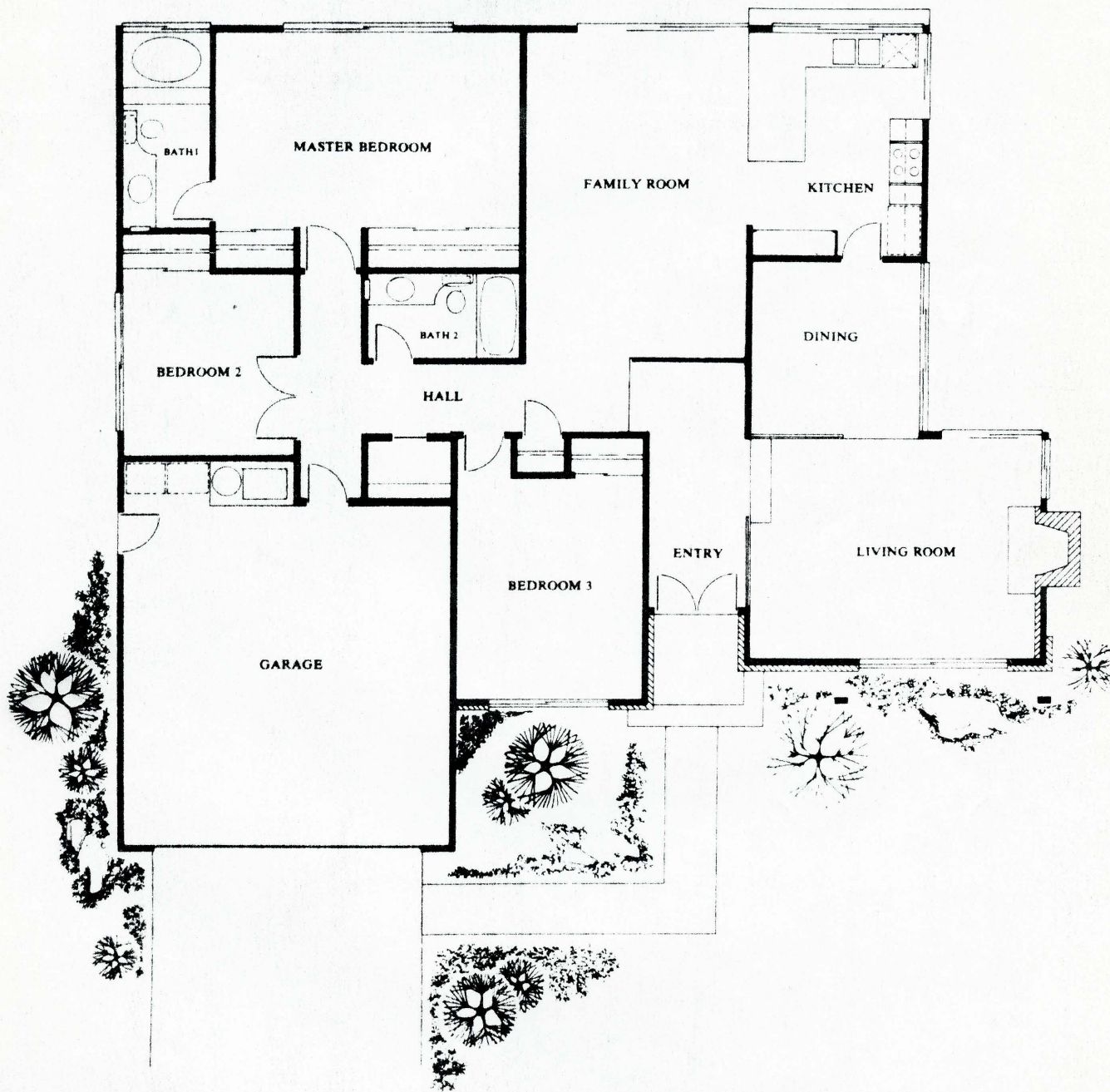
floor plan of unusual charm as you come through the double doors of the entry. You first glimpse the brick fireplace and hearth in the step-down living room. The adjoining dining room is slightly raised, so that dinner guests can overlook this hospitable living area. The adjacent garden kitchen looks directly into the outdoor patio and also has a good-sized breakfast nook for informal family meals. Retracing your steps—noticing, we hope, the sloped ceilings and wrought-iron railings along the way—you come to the double doors of a master bedroom suite which, we believe, would delight Princess Grace herself. A sense of privacy, a 12-foot wardrobe and a spacious bath-dressing area enhance this “home away from home” bedroom. Another full bath and bedroom open into the hallway, as does still another room, which you may choose to call a library, bedroom—or den, as we’ve named it. ■ We’re just as fussy about a home’s efficiency as we are about its aesthetic values. That’s why we like the Monaco so much. It has a great sense of style, and it makes every square foot work.





**THE CARMEL** • Let's tour this charming house in counter-

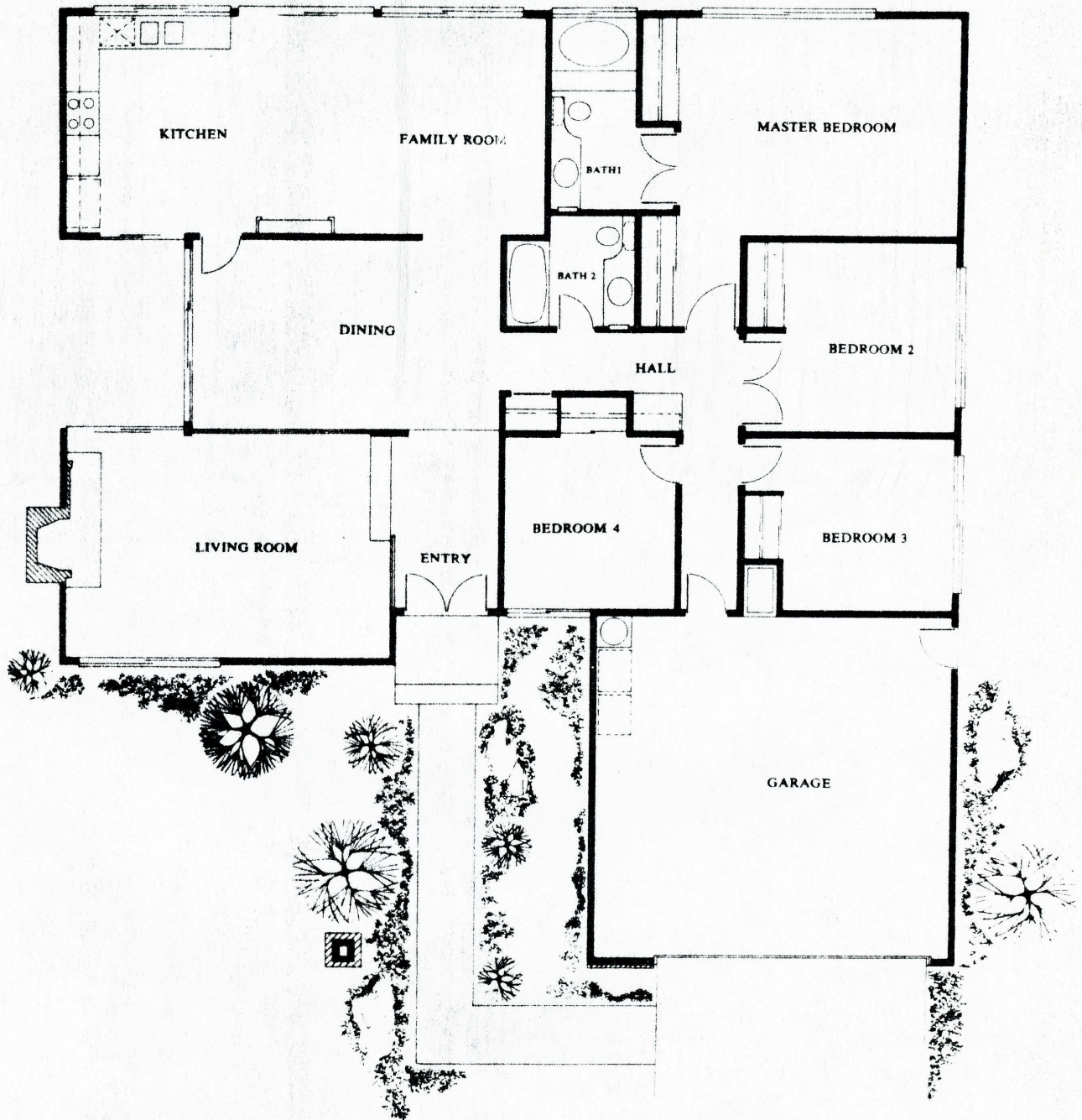
clockwise fashion, starting at the sheltered porch entry and going through the double doors of the foyer and down into the living room with its sloped ceiling and brick fireplace. Stepping up into the formal dining area, we direct your attention to the balcony-like railing, "wall" of glass, and dramatic ceiling. The kitchen, as you can see, is exceptionally large, with counter space to match. The sloped-ceiling family area has sliding glass doors for easy access to your garden. This family gathering place is so situated as to be the very heart of the Carmel. On now, down the hallway for a look into a 14-foot-long bedroom, the second bath (wait 'til you see the first!) and still another bedroom. A turn in the hall brings you to your away-from-it-all master bedroom. This suite measures just under 24 feet in length, which means there is room for a sofa, a desk and a lounge chair or two... almost like having your own private apartment in your own home!



PLAN 2



**THE MONTEGO** • Every great home has its one great feature and in the Montego, you see it the moment you enter the sloped-ceiling entry. There it is, straight ahead of you, the immense country kitchen . . . which is not merely a kitchen, but a whole new way of family togetherness. So new, it's really old. Twenty-eight feet long, it's a marvelously designed room for serving up hot dogs for the kids, or your best Julia Child recipe for guests. With all this old-fashioned roominess to work in, you may want to use the kitchen area for informal family dining and make the far end of the room a cozy seating area for family conversation. For more formal entertaining, you have a charming dining room, which adjoins a step-down living room with an eight-foot hearth. Bedrooms there are aplenty, at least two for the children, plus a den that can be anything you want it to be. When the guests have gone, the cat is out and the children are sound asleep, retire to your elegant bedroom suite and pretend you're off on a second honeymoon.

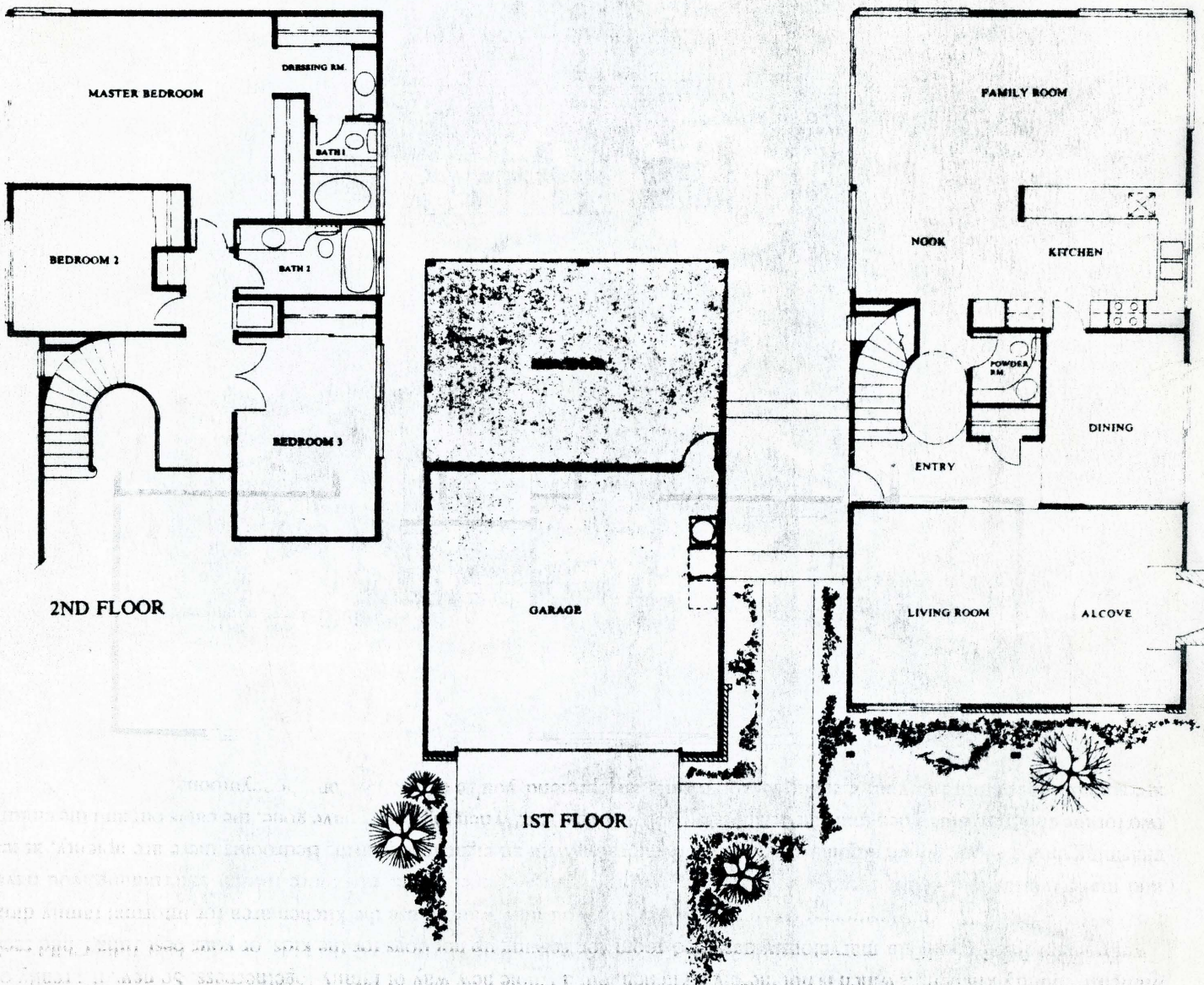


PLAN 3



**THE PORTOFINO** • This house leads two lives as you

will see. Its formal life is expressed in the private side entrance, the high-ceilinged, breezeway entry, the curved elegant staircase with its graceful balustrade treatment. Even the 24-foot living room has more the air of a drawing room. Dramatic high ceiling, exposed beams, step-down conversation area with hooded fireplace, are added virtues that make for entertaining on the grand scale. (Did you notice that the entire width of the fireplace wall is bricked to fireplace height? Nice touch.) If it's a sit-down dinner, your commodious dining room will accommodate 6 or 8 guests easily. The Portofino leads a casual country sort of life, too. The kitchen, breakfast area and family room are surrounded on all sides by windows and sliding glass doors, which overlook the large patio courtyard (perfect for a pool, by the way). ■ Upstairs are two roomy bedrooms sharing an adjacent bathroom, and a master suite styled in the usual Westlake Hills manner... in this case, a sloped-ceiling retreat nearly 27 feet long! (Are you ready for an oval tub you step up to?) ■ We've saved possibly the best for last. Notice the space in back of the garage, please. The Idea Space... aptly named because we have no idea what you'll make of it. The Idea Space was designed to enable you, the homeowner, to enlarge your Portofino to accommodate the varying needs of your growing family. Are you getting the idea?

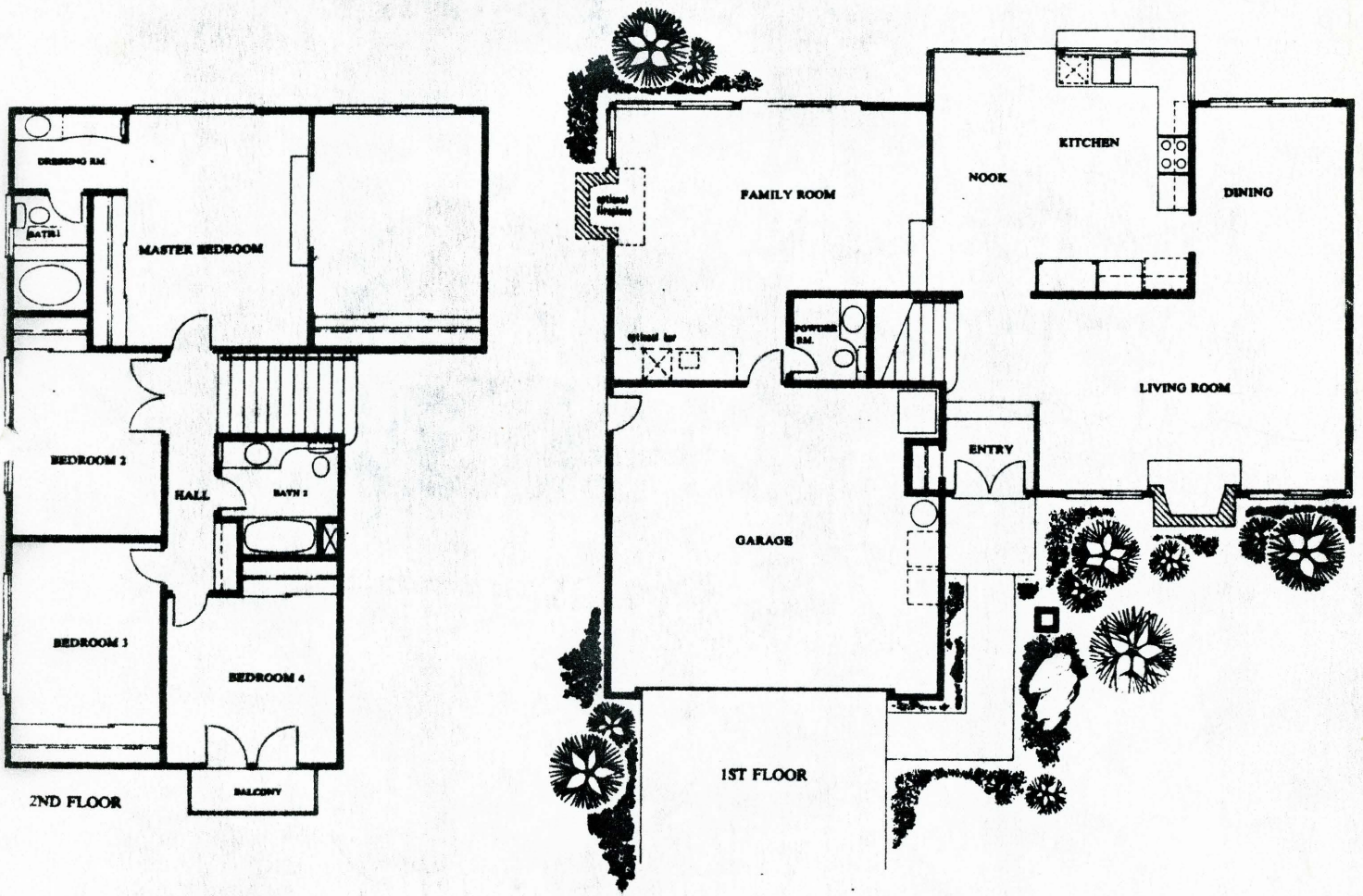


**PLAN 4** THE MONTFICO - Every great home has its...



**THE PALERMO** • The Palermo is a large home, and you

realize it the moment you enter the slope-ceiling foyer and step up into the immense living-dining room. This is a gracious area designed for entertaining large groups with ease. The adjoining kitchen is also large, with generous work room and counter space for you to organize the serving details. When it's "just family," you'll enjoy the large, 16-foot, adjoining breakfast area, which overlooks the cheerful family room. Another nice feature of this downstairs plan is the manner in which it separates the youngsters' activities from the grown-ups! While we're here in the family room, notice the guest bath and optional bar and fireplace. ■ Moving right along now, we go up the grand staircase to see the happy arrangement of the three bedrooms and the family-sized bathroom. (The lucky one who gets bedroom number 4 also gets his own private balcony!) Brace yourselves, now, for a master suite that might run you 20,000 lira a day on the Italian Riviera. Twenty-eight feet long, it has large wardrobe space and a luxurious bath-dressing area. At the opposite end is the raised, iron-railed sleeping area. The central part of the suite makes an ideal sitting room... your own private lair for reading, television, or whatever.





**THE GENOA** • As you enter onto the spacious raised entry through the elegant double door entry, you are greeted by a home of individual style and warmth. Turn right and step down into the heart of the Genoa. The 26-foot long family room and kitchen accented by a large fireplace and 14-foot "wall of glass," not to mention the sloped ceiling and pass-thru kitchen window, make this room the *living* center of the home. Leaving the family room, you step down into the formal yet cozy living room, perfect for guest pleasing in the parlor tradition. Just down the hall is the double door entry of the master bedroom suite with sloped ceiling, separate dressing room and bath. To complete this charming plan we've added two more bedrooms and a bath, making this truly a home in which to *live*.

